

AquaLynx® 400 LX

Water Treatment Control System

The AquaLynx® Model 400 LX series of water treatment monitoring and control units is the latest addition to the RODI Systems' AquaLynx® product line. These unique multi-parameter controllers are suitable for a number of water treatment applications including:

- Reverse Osmosis
- Cooling Towers
- Boilers
- Heating and Cooling Systems
- Ion Exchange
- Electro-Deionization
- Chemical Injection Control
- Wastewater Treatment
- Neutralization Systems
- Lift Stations
- Distribution Systems
- Filtration Systems
- Softeners

Features

The AquaLynx® 400 LX is a complete control system in a small, cost-effective package. All 400 LX products incorporate the following features:

- Various configurations available for monitoring multiple parameters including pH, ORP, conductivity, temperature, flow, discrete inputs, and 4-20 mA analog inputs
- Up to eight relay outputs and two 4-20 mA outputs
- Color touchscreen operator interface
- Housed in a durable NEMA 4X non-metallic enclosure with protective window over the touchscreen
- Realtime clock
- AC power, 120 VAC, 60 Hz, GFCI protected, (240 VAC also available)
- UL listed under UL508A
- Internal data logging
- Optional SCADA software interface



RODI's AquaLynx® 400 LX products are ideal for water treatment applications from reverse osmosis to chemical injection control and filtration systems. Communications options allow interfacing with most building management systems.

- Numerous communication options including Ethernet, telephone modem, web-to-wireless, and industrial protocols
- Multiple programs available for various applications. Custom programming available

The AquaLynx® 400 LX is available with several input configurations. Inputs are available for monitoring or controlling any of the following:

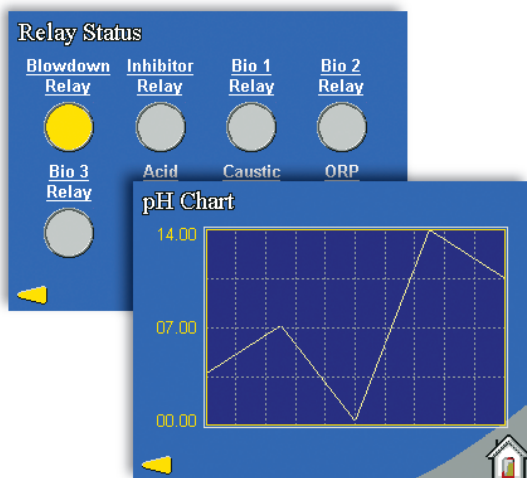
- pH
- ORP
- Conductivity
- Temperature
- Flow
- Pressure
- Level
- Chemical Injection

Call us to learn which AquaLynx® configuration will best fit your application.

AquaLynx 400 LX[®]

Advantages

- **Cost Effective** – Multiple parameters in one controller results in a lower total cost for most control applications. Serial networking feature reduces installation cost.
- **Easy to Use** – All controllers in the 400 LX product line operate in a similar fashion. Learn one, you know them all.
- **Cost Effective** – Flexible programs allow one controller to serve multiple applications, and custom programming is available. Optional interface with most building management systems.
- **Solid Tech Support** – Tech support and applications assistance are provided by the people that designed and programmed the product.
- **Color Touchscreen Interface**
An intuitive, graphic touchscreen makes the AquaLynx[®] 400 LX extremely easy to use.



Network Communication Options

Various network communication modules are available to give the AquaLynx[®] LX products connectivity to network protocols now commonly used in commercial and industrial applications. The following network protocols are currently supported:

- BACnet IP
- Modbus RTU
- Modbus TCP

AquaLynx[®] M2M Interface The AquaLynx[®] M2M interface allows the user to monitor AquaLynx[®] devices via a nation-wide cellular network. Reporting conditions and reporting frequency may be changed. Alarms and conditions may be reported via text message. An RS-485 serial port allows the wireless to web interface to be connected to multiple AquaLynx[®] units at one remote location.

